

PROWENT

FIREPLACES • VENTILATION



**ALL YOU NEED
- AS FAST AS POSSIBLE**

**FLEXIBLE DUCTING
AND ACCESSORIES**

Prowent Bialystok is a rapidly growing HVAC wholesaler based in Poland. Our story started in 2000 and since then we have become **a thought partner at the HVAC market**. Our core business is supplying customers with flexible ducts and duct/fitting accessories. The main motto of the company is: **All you need – as fast as possible**.

Wide offer variety and **fast delivery** are our main advantages. We reach customers from European Union within 2-5 working days. The main products in our offer are flexible ducts (insulated and uninsulated) and duct/fitting accessories such as supply and exhaust valves, external louvers, suspension clamps and bands, connectors and many more.



As the the **main importer of Flexiva** flexible ducts, ventilation accessories, calcium – silicate insulation board and Hansa chimney cleaning accessories we offer the **most competitive prices**. As we have almost **6000 types of products in our offer** we are able to supply even the most demanding customers from HVAC business with products they need as fast as possible.

For the convenience of our customers we have launched a very successful **B2B platform** that is used every day – our customers can place orders directly via website and earn points that can be exchanged for attractive prizes.



Size of our warehouses is over **3300 square meters** and they can hold nearly **8000 pallets**. Thanks to that we are able to provide you with the **products you need off the shelf**. Every year we serve **over 1400 customers** and supply them with **8500 pallets** and **12 000 parcels**. We are continuously present at the most prestigious fairs in the industry, such as ISH in Frankfurt, Progetto Fuoco in Verona, Budma in Poznan and Forum Wentylacja in Warsaw and more.

Our main asset is **customer oriented and well organized sales department**. They are always happy to help with preparing end to end offer and support you with proper guidance at every stage of your order. You will be able to optimize your work thanks to our immediate response to your needs. Prizes and honorable distinctions we received over the last years are the best proof that our core values are appreciated by our business partners.

To get to know us better please visit our website www.prowent-bialystok.com

FLEXIBLE VENTILATION DUCTS

Insulated flexible ducts

ISOTHERM LIGHT

Available in 5 m length (applies to diameter 102-162).
Flexible ducts with thermal and acoustic insulation.
Designed for transporting air in air conditioning
and ventilation systems. Noise and vibration dampening,
reducing fittings use.

**On request, ducts with 5 cm insulation and 5 m
length are available.**

WARNING!
Perforated ducts are additionally protected with a polyester film preventing
from moisture and wool fragments falling into the installation.

Maximum working temperature 140°C. ITH-L - internal coating without acoustic perforation.
STH-L - internal coating with acoustic perforation and polyester film.



Symbol	Diameter [mm]	Net price
ITH-L/STH-L	85	18,48
ITH-L/STH-L	102	18,48
ITH-L/STH-L	127	21,65
ITH-L/STH-L	152	24,82
ITH-L/STH-L	162	25,61
ITH-L/STH-L	203	31,42
ITH-L/STH-L	254	38,55
ITH-L/STH-L	318	48,59
ITH-L/STH-L	356	50,70
ITH-L/STH-L	407	59,95
ITH-L/STH-L	457	64,70
ITH-L/STH-L	508	77,11

All given prices relate to 1 pc (10 m) of duct
Ducts are sold in boxes of 10 m (compressed to 120 cm)
*also available in length of 5 m

Non-insulated flexible ducts

THERM LIGHT



Standard length – 10 m pieces

Symbol	Diameter [mm]	Net price
TH-L	85	6,33
TH-L	102	6,33
TH-L	127	7,97
TH-L	152	9,77
TH-L	162	10,30
TH-L	203	13,73
TH-L	254	17,16
TH-L	318	21,39
TH-L	356	24,29
TH-L	407	28,25
TH-L	457	34,25
TH-L	508	38,29

Insulated flexible ducts

Flexible ducts with thermal and acoustic insulation made
of metallized polyethylene. Designed for transporting air in
air conditioning and ventilation systems. Noise and
vibration dampening, reducing fittings use.
Produced in accordance with ISO 9001 - 2008
Quality Management System.
Complies with EN 13180 standards.
Thanks to the smooth surface, which
the interior PET provides, the pressure loss
decreases and provides more hygienic
environment by preventing the formation
of bacteria.



Symbol	Diameter [mm]	Net price
OPP	102	14,14
OPP	127	18,77
OPP	162	22,26
OPP	203	26,62
OPP	254	32,15
OPP	318	40,09

ISOTHERM LIGHT ECO

Maximum working temperature 80°C.
Standard length – 10 m pieces
Duct are sold in boxes of 10 m (compressed to 120 cm)

FLEXIBLE VENTILATION DUCTS, CONNECTORS

Flexible ducts with thermal insulation - aluminum ISOTHERM/SONOTHERM

ISOTHERM MO



All given prices relate to 1 standard piece (10 m length).
Ducts are sold in boxes of 10 m (compressed to 120 cm).
*also available in sections of 5 m.

Internal casing - aluminum, external - aluminized foil. Maximum working temperature 250°C			
No perforation	With perforation	Diameter	Net price
Symbol	Symbol	[mm]	
ITH	STH	Ø85	27,75
ITH	STH	Ø102	27,75
ITH	STH	Ø127	29,85
ITH	STH	Ø152	33,55
ITH	STH	Ø162	34,05
ITH	STH	Ø203	49,90

... - Diameter (e.g. ITH-125)

Flexible insulated sleeve for pipes and rectangular ducts ISOTHERM SLEEVE

ISOTHERM SLEEVE



All given prices relate to 1 standard piece (10m length). As a standard, the ducts are sold in sections of 10 m.

Symbol	Diameter [mm]	Duct dimension [mm]	Net price
ITH-SLE	Ø102	-	21,40
ITH-SLE	Ø127	-	22,70
ITH-SLE	Ø162	150x50	24,80
ITH-SLE	Ø203	200x90	28,80

... - Dimension or diameter (e.g. ITH-SLE150x50 or ITH-SLE102)

Kugar flexible connector

Material:	0,40 mm galvanized sheet, polyester fabric reinforced with PVC
Fire retardancy:	Flame retardant
Working temperature range:	-30°C / + 80°C
Additional features:	Resistant to UV radiation, tearing and stretching. High insulation
Packaging:	25 m sections packaged in cardboard boxes
Standard dimensions (other available on request):	<ul style="list-style-type: none"> • 35 mm x 60 mm x 35 mm • 45 mm x 60 mm x 45 mm • 45 mm x 75 mm x 45 mm • 70 mm x 100 mm x 70 mm



Description	Net price
KUGAR standard PVC 35x60x35 Connector	32,48
KUGAR standard PVC 45x60x45 Connector	36,97
KUGAR standard PVC 45x75x45 Connector	39,87
KUGAR standard PVC 70x100x70 Connector	55,72

The flexible connector prevents sound transmission and vibration to rigid ventilation ducts. Fabric between two strips of sheet metal is attached in multiple places, which creates a lasting and non-laminating connection. Easy to install in both square and round ducts.

Flexible ducts COMBIFLEX

Material:	Multilayered aluminum covered with tight and PVC coat
Working temperature range:	-30°C / + 150°C
Packaging:	10 m sections packaged in a cardboard box



The ducts are recommended for ventilation and air-conditioning as well as heating systems. The entire duct is reinforced with spirally wound spring steel wire. Another advantage of this type of ducts is no steam condensation.

Description	Diameter [mm]	Net price	Description	Diameter [mm]	Net price
C-FLEX-85	85	13,20	C-FLEX-203	203	26,41
C-FLEX-102	102	13,73	C-FLEX-254	254	34,33
C-FLEX-127	127	17,16	C-FLEX-305	305	41,72
C-FLEX-152	152	21,12	C-FLEX-318	318	43,57
C-FLEX-162	162	21,65	C-FLEX-356	356	54,14

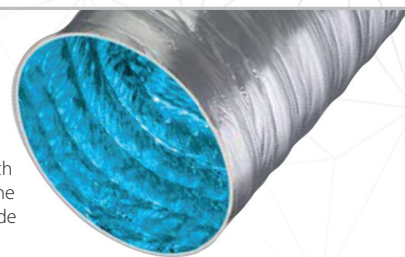
FLEXIBLE VENTILATION DUCTS

Artist Polyethylene
– duct insulated with polyethylene foam.



Artist Polyethylene Hygienic
– duct insulated with polyethylene foam.

The internal coat is covered with an antibacterial layer limiting the growth of microorganisms inside the ventilation duct.

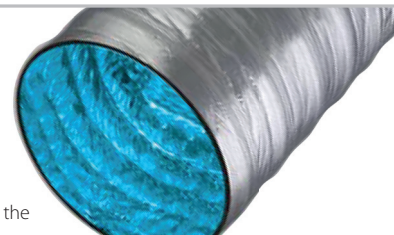


Artist Rubber
– duct insulated with natural rubber foam.



Artist Rubber Hygienic
– duct insulated with natural rubber foam.

The internal coat is covered with an antibacterial layer limiting the growth of microorganisms inside the ventilation duct.



NEW IN HVAC Innovative ventilation ducts

Artist are fully laminated, flexible ducts used for transporting air inside air conditioning and ventilation systems. They are excellent to use in hard to reach areas – where installing a rigid spiro duct would require a number of additional fittings, or where installation would be problematic due to large diameter of pipe with wool insulation.

The insulation used with these ducts is strong – in the event of tearing of the exterior, there is no risk of insulation particles to reach the ventilation system, like in case of wool. Proper rigidity and maintaining the duct cross-section is achieved by spirally wound wire frame with high durability.

The insulation is 100% waterproof which allows Artist ducts to be used in moist environments, whereas the highly compact – laminated construction leads to minimal heat losses.

Technical specification

Technical specification		
Material	Aluminum	
Diameter range	Ø100 mm – Ø610 mm	
Working temperature range	-30°C / +150°C	
Air speed	Max. 30 m/sek.	
Working pressure	Max. 5000 Pa.	
Fire retardancy	Flame retardant	
Packaging	7,5 m pieces, packaged in 170cm cardboard boxes	
Insulation	Polyethylene foam	Density: 35 kg/m ³ . Standard thickness 6 mm
	Natural rubber foam	Density: 50–65 kg/m ³ . Standard thickness 6 mm
External coat:	Polyester laminated aluminum	
Internal coat:	Polyester laminated aluminum	

Polyethylene insulation		
Description	Diameter [mm]	Net price
ART-P-102	102	21,12
ART-P-127	127	22,44
ART-P-152	152	27,73
ART-P-162	162	29,05
ART-P-203	203	39,61
ART-P-254	254	47,53
ART-P-305	305	55,46
ART-P-318	318	58,10
ART-P-356	356	76,58

Natural rubber insulation		
Description	Diameter [mm]	Net price
ART-R-102	102	30,37
ART-R-127	127	34,33
ART-R-152	152	42,25
ART-R-162	162	43,57
ART-R-203	203	54,16
ART-R-254	254	60,74
ART-R-305	305	84,51
ART-R-318	318	92,43
ART-R-356	356	116,20

AIR TERMINAL DEVICES, AIR VALVES, GRILLES

Metal air supply/exhaust valves



supply



exhaust

Mounting collar included in the price.
Face painted with RAL 9016 colour, zinc plated mounting collar.

Intake	Extraction	Diameter [mm]	Net price
Symbol	Symbol		
SV	EV	Ø80	3,58
SV	EV	Ø100	3,58
SV	EV	Ø125	4,10
SV	EV	Ø150	4,87
SV	EV	Ø160	5,12
SV	EV	Ø200	7,69

... – Diameter (e.g. SV-125)

Universal stainless steel valves (supply and exhaust)



Mounting collar included in the price
Stainless steel face and collar

Symbol	Diameter [mm]	Net price
VS	Ø100	9,74
VS	Ø125	12,05
VS	Ø150	15,38
VS	Ø160	17,43
VS	Ø200	29,23

... – Diameter (e.g. VS-125)

External vent louvers



ELA components are additionally fitted with insect screen. Rubber washers and installation grips make for an easy installation.

External ring has 2 installation orifices. Characterized by high aesthetics and strength. For indoor and outdoor use.

Symbol	Diameter [mm]	Net price
ELA	Ø100	9,23
ELA	Ø125	12,30
ELA	Ø150	14,87
ELA	Ø160	16,15
ELA	Ø200	29,48

... – Diameter (e.g. ELA-125)

External vent louvers with drip cap



VLA components feature a semi-circular cover protecting from air being blown in and sloped blades which direct the air flow downwards. Additionally fitted with an insect screen. Rubber washers and installation grips make for an easy installation. Characterized by high aesthetics and strength. For indoor and outdoor use.

Symbol	Diameter [mm]	Net price
VLA	Ø100	11,53
VLA	Ø125	13,71
VLA	Ø150	15,76
VLA	Ø160	16,41
VLA	Ø200	31,92

... – Diameter (e.g. VLA-125)

Aluminum external vent



Symbol	Diameter [mm]	Net price
ELC1	Ø100	1,94
ELC1	Ø125	2,46
ELC1	Ø150	3,33
ELC1	Ø160	3,48
ELC1	Ø200	5,15
ELC1	Ø250	9,97
ELC1	Ø315	18,46
ELC1	Ø400	32,05

... – Diameter (e.g. ELC1-125)

CLAMPS, INSTALLATION MATERIALS

Spiral clamps with rubber



Symbol	Diameter [mm]	Net price
SCP-B 80	80	0,72
SCP-B 100	100	0,83
SCP-B 125	125	0,93
SCP-B 150	150	1,06
SCP-B 160	160	1,09
SCP-B 180	180	1,19
SCP-B 200	200	1,30
SCP-B 225	225	1,45
SCP-B 250	250	1,53
SCP-B 280	280	1,68
SCP-B 300	300	1,76
SCP-B 315	315	1,79
SCP-B 355	355	2,00
SCP-B 400	400	2,26

Multi-hole perforated band



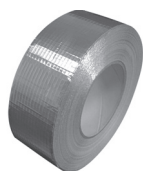
Symbol	Length [m] x Width [mm]	Net price
FB-17-06	25 x 17	12,56
FB-20-06	25 x 20	13,58
FB-25-06	25 x 25	16,66

Clamp band with locking devices (multi clamps)



Symbol	Name	Net price
CMB	Clamp band / 30m	15,05
CMC	Multi clamps 50 pcs.	15,05

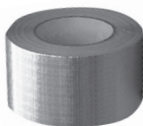
Aluminum tape



Symbol	Length [m] x Width [mm]	Net price
TAL50/50	50 x 50	4,87
TAL75/50	50 x 75	6,92

Maximum working temperature 90°

Reinforced aluminum tape



Symbol	Length [m] x Width [mm]	Net price
TALE50x50	50 x 50	6,66
TALE75x50	50 x 75	10,25
TALE100x50	50 x 100	12,82

Maximum working temperature 90°

Duct tape



Symbol	Length [m] x Width [mm]	Net price
TAU	50 x 50	3,46

RECUPERATION

A modern system of flexible ventilation ducts for comfortable air distribution and relatively small diameters. Perfect for installation hidden in ceilings, poured concrete or suspended ceilings. The system consists of ducts, plenum boxes, distribution boxes, washers and additional pieces allowing for easy design of connections such as hole plugs and connectors.

All components are made of materials with high durability and mechanical strength, which allows them to be buried in ceiling structure or ceiling poured concrete. The use of thermo-shrinking washers and connectors ensures full tightness and impeccable cleanness of the system.

DN75 FLEXIBLE DUCT hygienic



Symbol	Net price
R24F	2,91/m

DN75 FLEXIBLE DUCT with antibacterial coating



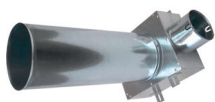
Symbol	Net price
R24SIL	3,40/m

PLENUM BOX 1x75 mm / 100 mm (round)



Symbol	Net price
SK 1x75-100	17,42

PLENUM BOX 1x75 mm / 125 mm (square)



Symbol	Net price
SK 1x75-125	18,14

PLENUM BOX 2x75 mm / 125 mm



Symbol	Net price
SK 2x75-125	22,48

PLENUM BOX 2x75 mm / 125 mm (pass-through)



Symbol	Net price
SK 2x75-125-P	25,40

PLENUM BOX 3x75 mm / 125 mm



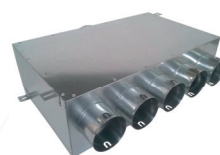
Symbol	Net price
SK 3x75-125	25,77

PLENUM BOX 3x75 mm / 125 mm (pass-through)



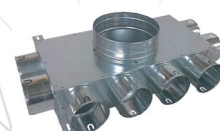
Symbol	Net price
SK 3x75-125-P	31,48

PLENUM BOX 5x75 mm / 125 mm (pass-through)



Symbol	Net price
SK 5x75-125-P	44,62

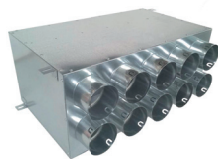
PIPE DISTRIBUTOR 8x75 mm / 160 mm



Symbol	Net price
SK 8x75-160	67,14

RECUPERATION

**PIPE DISTRIBUTOR
DUAL STACK
10x75 mm / 200 mm**



Symbol	Net price
SK 10x75-200D	104,51

**PIPE DISTRIBUTOR
10x75 mm / 160 mm
with panel**



Symbol	Net price
SK 10x75-160P	145,14

**PIPE DISTRIBUTOR
12x75 mm / 200 mm**



Symbol	Net price
SK 12x75-200	89,62

**PIPE DISTRIBUTOR
DUAL STACK
12x75 mm / 200 mm**



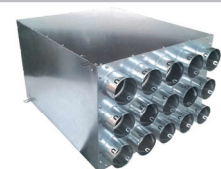
Symbol	Net price
SK 12x75-200D	112,48

**PIPE DISTRIBUTOR
14x75 mm / 160 mm**



Symbol	Net price
SK 14x75-160	101,60

**PIPE DISTRIBUTOR
15x75 mm / 200 mm
with panel**



Symbol	Net price
SK 15x75-200P	161,11

**PIPE DISTRIBUTOR
16x75 mm / 200 mm**



Symbol	Net price
SK 16x75-200	128,82

**PIPE DISTRIBUTOR
18x75 mm / 200 mm**



Symbol	Net price
SK 18x75-200	132,80

**DN75 ROUND DUCT
CONNECTOR**



Symbol	Net price
SK 03/75	1,71

DN75 WASHER



Symbol	Net price
SK 06/75	0,91

DN75 HOLE PLUG



Symbol	Net price
SK 05/75	0,97

METAL VENTILATION GRILLES, INSPECTION DOORS



Symbol	Color	Dimensions [mm]	Net price
KW14x14	powder coated	140x140	1,83
KW14x14n	stainless	140x140	2,25
KW14x21	powder coated	140x210	2,53
KW14x21n	stainless	140x210	3,24
KWS14x14	powder coated	140x140	1,83
KWS14x14n	stainless	140x140	2,25
KWS14x21	powder coated	140x210	2,53
KWS14x21n	stainless	140x210	3,24
CK14x14	powder coated	140x140	1,26
CK14x14n	stainless	140x140	1,97
CK14x21	powder coated	140x210	1,83
CK14x21n	stainless	140x210	2,53
CKS14x14	powder coated	140x140	1,26
CKS14x14n	stainless	140x140	1,97
CKS14x21	powder coated	140x210	1,83
CKS14x21n	stainless	140x210	2,53

Available colors: white, brown, graphite, brick-red, black, stainless.
Fitted with insect screen

KW - straight grille
KWS - angled grille
CK - grille face without installation frame, straight
CKS - grille face without installation frame, angled

Inspection doors



Symbol	Color	Dimensions [mm]	Net price
DW 14x14	white	140x140	3,10
DW 14x14br	brown	140x140	3,10
DW 14x14n	stainless	140x140	4,08
DW 14x21	white	140x210	3,52
DW 14x21br	brown	140x210	3,52
DW 14x21n	stainless	140x210	4,83

ON-ROOF COMPONENTS

Rotary chimney cowl SPHERICAL



Symbol	Dimensions [mm]	Material/Color	Net price
NOK150AL	Ø150	aluminum	51,35
NOK150N	Ø150	stainless	64,28
NOK200AL	Ø200	aluminum	70,46
NOK200N	Ø200	stainless	89,53

Rotary chimney cowl NARROW



Symbol	Dimensions [mm]	Material/Color	Net price
NOP150AL	Ø150	aluminum	61,35
NOP150N	Ø150	stainless	64,28

Self adjusting chimney cowl*

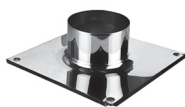
* - stainless steel sheet



Symbol	Dimensions [mm]	Material/Color	Net price
NOS150	Ø150	stainless	50,05
NOS180	Ø180	stainless	53,28
NOS200	Ø200	stainless	62,97

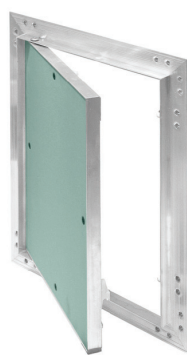
Chimney cowl base*

* - stainless steel sheet



Symbol	Dimensions [mm]	Material/Color	Net price
PPS150	Ø150	stainless	17,46
PPS180	Ø180	stainless	21,61
PPS200	Ø200	stainless	23,92

ALUMINUM ACCESS FLAPS, PLASTIC AIR VALVES



KRAL series aluminum hatches are made of aluminum profiles with 12,5 mm water-proof cardboard-gypsum fill.

The hatches use spring lock mechanism which creates an even surface with no handles or grips. To open the hatch, press near the longer side of the openable section.

KRAL access hatches allow easy inspection of wall and ceiling mounted openings and recesses with gas meters, water meters, electrical meters, household hydrants, etc.

Manufactured in large dimensions, they can be used with large distributor equipment, e.g. CH distributors.



Internal dimensions



External dimensions

Symbol	Internal dimensions [mm]	Net price
KRAL1	150x200	16,43
KRAL2	200x200	17,94
KRAL3	200x250	18,69
KRAL4	200x300	19,43
KRAL5	225x300	20,20
KRAL6	250x300	20,92
KRAL7	250x330	21,69
KRAL8	250x350	22,43
KRAL9	250x400	24,07
KRAL10	300x300	21,69
KRAL11	300x600	28,41
KRAL12	400x400	25,41
KRAL13	400x600	30,66
KRAL14	500x500	31,38
KRAL15	600x600	35,87
KRAL16	150x150	15,61
KRAL17	200x400	21,38
KRAL18	250x250	19,74
KRAL19	300x400	23,84
KRAL20	300x500	26,30
KRAL21	400x500	28,76
KRAL22	500x600	35,33

NEW

Plastic air valves



Symbol	⊕ Øa [mm]	⊖ Øx [mm]	Coll. packaging pcs.	Net price
AN1	Ø100	Ø150	50	3,00
AN2	Ø125	Ø170	40	3,30
AN3	Ø150	Ø215	25	4,10

Available colour white



square meters
of warehouses



satisfied
customers



types
of products



years

on the
market



pallets
yearly



parcels
yearly

Białostoczek 17
15-592 Białystok
phone: +48 85 740 22 55
mob. +48 501 143 023
Poland
www.prowent-bialystok.com
sales@prowent.com

